



## DIGITAL SIGNAGE SOLUTIONS

32", 42", 46", 57", 70", 82"  
QUADRO LCD MONITOR  
INDOOR series

A NEW WAY TO INFORM



Bari Palese, ITALY  
PALESE INTERNATIONAL AIRPORT, Luggage Claim Area

**APPLICATIONS**

**IN AIRPORTS AND STATIONS**

The image sharpness and perfect text readability give passengers the latest and perfect information about arrivals and departures.

**IN RESTAURANTS**

The high definition and reliability of the various types and models of the range allow daily specials or offers to be shown easily and clearly.

**IN BANKS**

For high brightness and great contrast in daylight and no 'burn-in' effect after still images and/or detailed text is displayed.

**IN CONFERENCE HALLS**

To improve communication and presentations in meetings thanks to lively and vivid images.

**IN RECEPTION HALLS**

To present your brand and your organization to visitors with high quality images and clips.

**MALLS**

To offer the possibility of unlimited publicity and innumerable ways to communicate efficiently.

**RETAIL COMMUNICATIONS**

Exceptional image quality with Full HD of 1,920 x 1,080 pixel resolution makes the communications a realistic and productive experience.

**EVENTS AND SHOWS**

To supply information to spectators in all the various angles to the screen keeping all of them entertained.

**MEETINGS**

To transmit visual messages to management. Also from a distance and in very bright light.

**DESIGNING WITH A TEAM**

To share the entire design process as well as "visualize" all the details of the more components and the more sophisticated designs. With the large LCD monitors, everyone is able to see and examine the design from any angle.

HANTAREX monitors dedicated to Digital Signage and Videoinformative points can be used also for vertical applications as a high resolution sign for airports, stations and malls.

**QUADRO INFO-Public & Digital Signage LCD monitor series**

Hantarex QUADRO line is a monitor range especially designed to implement Public Information systems network location, such as airports 'FIDS' and 'GIDS', railways, bus stations, subways, and Digital Signage applications such as shopping malls, public venues, retail shops, etc.

The QUADRO range monitor opens a new era of visual communications optimizing the efficiency and quality of work in any application and in any sector. Excellent image quality and large screens, QUADRO monitors dedicated to Digital Signage and Videoinformative points, are the ideal solution of applications where image quality and perfect viewing are fundamental.

**Available sizes:**

- QUADRO LCD 32" HD DID
- QUADRO LCD 42" Full HD
- QUADRO LCD 46" HD High Brightness 1.500 CD/M
- QUADRO LCD 46" Full HD
- QUADRO LCD 57" Full HD
- QUADRO LCD 70" Full HD
- QUADRO LCD 82" Full HD

The 57" AND 82" models are also available in Silver Chromo finishing

The above mentioned sizes are also available with the further FUNCTIONALITIES:

- o STANDARD basic version
- o RPC3 with an Embedded Rack PC
- o Empty Embedded RPC3 drawer OPTIONALLY CUSTOMIZABLE from the user
- o IR TOUCH SCREEN functionality, 2 or up to 32 TOUCH POINTS
- o With optional ANTIREFLECTIVE/PROTECTIVE SCREEN GLASS



## HIGHLIGHTS and FEATURES

QUADRO range has been created to satisfy all the needs for video information applications for heavy traffic that require an integrated system of monitors with special technologic characteristics. These monitors are able to communicate with a centralized data base that manages data and information remotely, simply and directly. The monitors in this range can be integrated with a centralized system depending on the type of rapid connection systems and are an excellent compromise between quality, functionality and cost. Moreover the range has a full series of connections and optional functionalities such as the possibility to connect all the monitors in Loop-Through.

## TECHNICAL ADVANTAGES

The optional antireflection treatment, ample wide angle viewing, notable brightness and high contrast are factors that optimize the image quality also in very bright light.

### 1. No fan and an integrated heat sensor

These monitors have been designed to guarantee ventilation and heat dissipation without a fan, which often makes noise and accumulates dust. When the temperature inside these monitors rises for any reason, the monitors automatically control the rear illumination system, maintaining it below the maximum operating temperature. Therefore, the monitor automatically goes to standby mode when the internal temperature is higher than the optimum operating temperature.

### 2. Cabinet with metal rear and handle

These monitors are housed in a metal cabinet with a sturdy rear panel and with handles to transport the monitor. These monitors also have mounting holes that conform to VESA specification, so the monitors can be mounted to standard wall brackets that can be bought in a shop.

### 3. Designed for professional use

The sturdy cabinet and the well chosen components guarantee reliability even in applications that require prolonged use, for example: point of sales communications, external publicity, mass transit and security monitoring.

## TOUCH SCREEN functionality

The combination of IR Multitouch technology and integration of interactive entertainment and technology services, allows Hantarex to offer a unique product.

### Hantarex LCD IR Multitouch Interactive display

range is a powerful solution that allows users through software applications, to seek and share information needed, to design, plan, and enjoy with simple and intuitive finger gestures.

The displays, available in 46" as standard format and 70" and 82" on request, can be also used with both hands and by several people simultaneously.

The system can recognize up to 32 touch points at once, it does not utilize the FTIR or DSI technology, but it features a unique technology that allows to set up a true multitouch device using flat technology (LCD or LED) as tools.

Through digital signage software it is possible to remotely update and control the interactive station through an internet connection. Among the various applications, Hantarex, provide interactive softwares for services and products presentation with interactive video, browse catalogs, virtual 3D navigation and much more.

This range has been expressly designed and re-built for particular video information installations such as airports, train stations, trade shows, museums, hotels, malls, etc. The LCD monitors in this range are one of the most significant and innovative professional solutions, because the various models can be modified, each one has the functionalities required by the situation, which changes with areas with heavy traffic or the Digital Signage application.

## TO CAPTURE ATTENTION

# Digital Signage applications

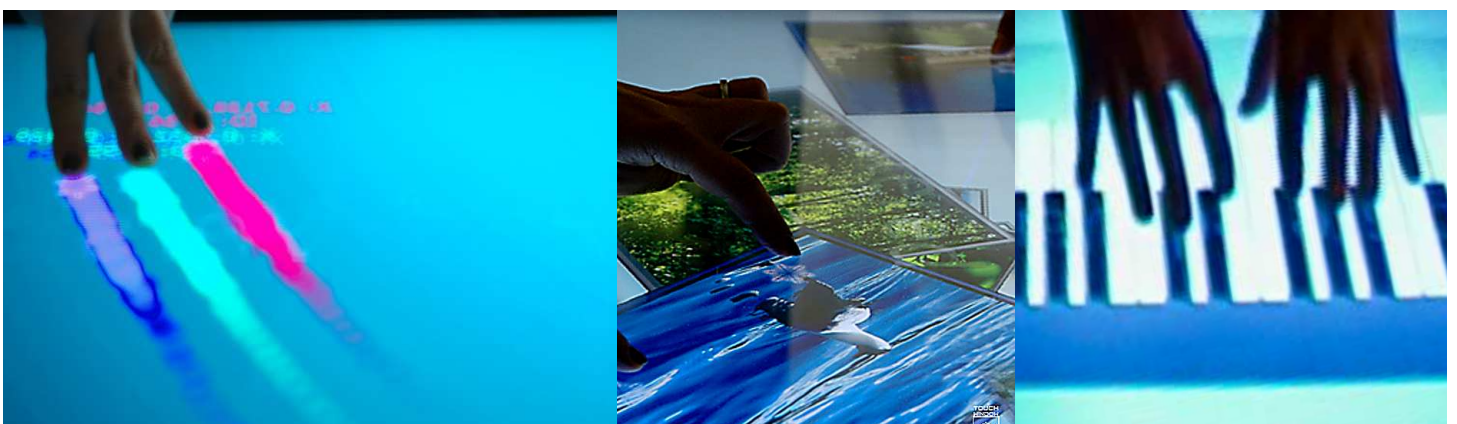


Habib Bourguiba - International Airport, Monastir, Tunis



32 Multi Touch Points - 82" QUADRO

# Multi Touch Screen applications



**Available in the STANDARDS:**

- LCD 32" RPC3
- LCD 42" RPC3
- LCD 46" RPC3
- LCD 46" HB - RPC3

all with Embedded PC type 2703

or

CUSTOMIZABLE with a PC chosen by the user

**available on the SPECIALS (on request):**

- LCD 70" RPC3
  - LCD 82" RPC3
- both with external PC

**QUADRO Embedded RACK PC (RPC3)**

Besides the standard version there is a special model with an embedded PC Rack (RPC3), which includes an integrated Embedded PC. Both the models can manage programming and display content according to the various modes. The PC's characteristics are available in the standard version (see charts) or can be chosen from the system integrator, configured to manage content locally and automatically display data and images. The PC is inserted in the monitor cabinet and can be easily extracted by sliding it from the rear of the cabinet.

This models range can be supplied with a special functionality that is a special antireflection filter that eliminates any problems caused by very bright light.

Last, but not least the RPC3 version range enables the IR Multi-Touch Screen functionality (already described), that allows an even more interactive usability of Digital Signage or general info/advertising contents.

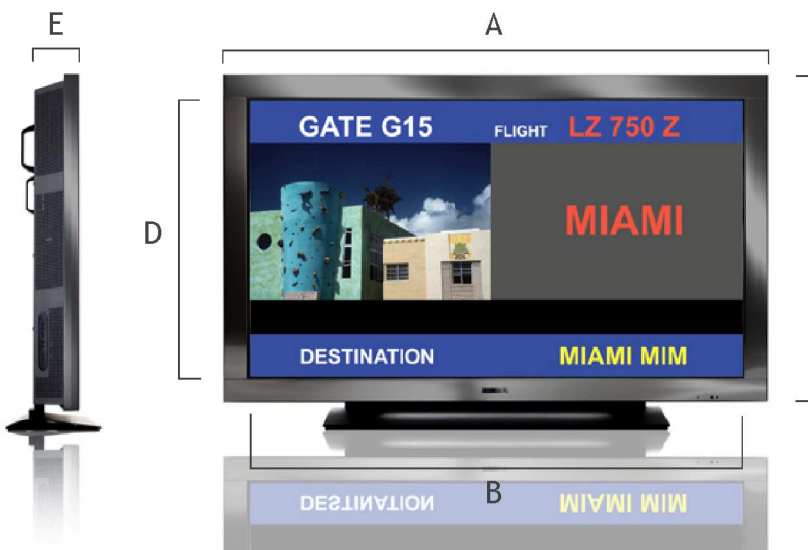
Hantarex's ability to develop personalized professional solutions is highlighted in this range of products. In fact, it is possible to personalize the configuration of the software and hardware of the PC integrated in the monitor as well as for the aesthetic features, such as colour painting and logo.

**Structural advantages**

The reinforced aluminum structure, engineered to guarantee the best quality and reliability, responds to the IP categories and all the parameters can be checked with a simple RS 232 interface. Particular video information applications are also available upon request, for example: large LCD screens of 57", 70" and 82" with a Full HD resolution of 1920x1080 pixels and extremely high contrast and brightness, not to mention the possibility to get a Loop-Through connection to drive daisy chain applications and the Videowall Splitter, among the standard functionalities.

**GENERAL DIMENSIONS**

|     | A    | B    | C    | D    | E   |
|-----|------|------|------|------|-----|
| 32" | 818  | 698  | 512  | 393  | 136 |
| 42" | 1050 | 930  | 643  | 523  | 136 |
| 46" | 1136 | 1019 | 692  | 573  | 158 |
| 57" | 1375 | 1252 | 827  | 704  | 147 |
| 70" | 1676 | 1550 | 999  | 872  | 147 |
| 82" | 1927 | 1806 | 1137 | 1016 | 152 |



**PROCESSOR SYSTEM** Embedded PC type 2703  
 disponibile nei formati STANDARD  
 32", 42", 46", 46" HB

**CPU** Core i3-330 M  
**Speed** 2.13 GHz  
**Front Side Bus** 1066 MHz  
**L2 Cache** 3 MB

**MEMORY**  
**Technology** DDR3 1066 MHz  
**Capacity** Up to 8 GB  
**Standard capacity** 2 GB  
**Socket** 2 x 204-pin SODIMM

**GRAPHICS**  
**Controller** Intel Gfx Gen5.75  
**Direct sw support** DirectX10 and OpenGL 2.1  
**VRAM** Shared system memory up to 1 GB  
**LVDS** Single channel 18/24-bit/Dual channel  
 36/48-bit LVDS  
**1st DVI** Max resolution 1920x1200  
**2nd DVI** Internal pin header, max resolution  
 1920x1200  
**Dual Display** CRT + LVDS, CRT + DVI, LVDS + DVI

**ETHERNET**  
**Interface** 10/100/1000 Mbps  
**Controller** GbE LAN1: Intel 82577LM; GbE LAN2:  
 Intel 82583V  
**Connector** RJ-45 x 2

**SATA**  
**Max Data Transfer** 300 MB/s  
**Rate** 4  
**Channels** 160 GB  
**Default capacity HDD** 3,5" SATA

**Rear I/O**  
**VGA** 1  
**DVI** 1  
**Ethernet** 2  
**USB** 4 (USB 2.0 compliant)  
**Audio** 3 (Mic-in, Line-out, Line-in)  
**Serial** 2 (RS-232)  
**PS/2** 2 (1 x keyboard and 1 x mouse)

**WATCHDOG TIMER**  
**Output** System reset  
**Interval** Programmable 1 ~ 255 sec/min

**ENVIRONMENT**  
**Temperature**  
**Operating** 0° ~ 40° C (32 ~ 140° F)  
**Non-Operating** -20 ~ 70° C (-4 ~ 158° F)

**PHYSICAL**  
**CHARACTERISTICS** Mini-ITX  
**Format Dimensions** 170 mm x 170 mm (6.69" x 6.69")

**SOFTWARE**  
**Operating system** Windows 7 Pro  
 (optional)



**Specification for QUADRO range**  
**STANDARD version**  
**HIGH BRIGHTNESS version**

- compliance IP30
- High Brightness (1500 cd/mq), 46" panel
- Standard 32", 42", 46", 57", 70", 82" panel from 450 to 700 cd/mq, with Full HD resolution
- Maximum width: 140 mm
- AUTODIAGNOSTICS protocols via serial port RS 232
- Key board control (On/Off)
- IR Control (On/Off)
- Input Signal presence check
- Fans status check
- Internal temperature check
- Ambient light control
- Presence control (Optional)
- Shock sensor (Optional)

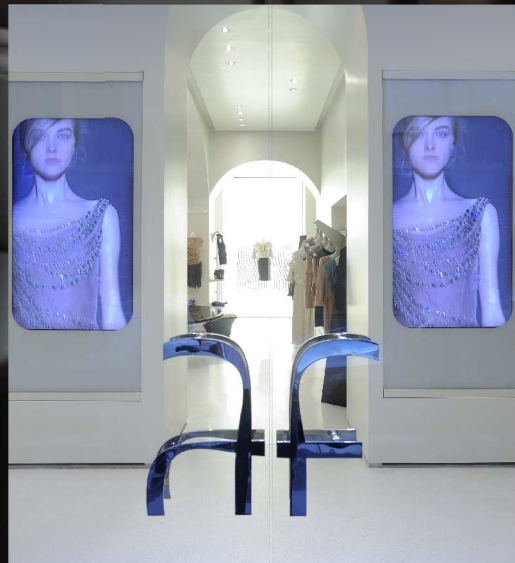
**Viewewall function:** automatic splitter up to a 5x5 configuration with bezel compensation.

**Loop-Through function (OPTION):**

- RS-232 pass-through
- VGA pass-through
- all INPUTS convertible in DVI e retransmitted (up to 25 hops)

**Specification for QUADRO range**  
**IR Multi-Touch Screen versions up to 2, 6, 32 touch points**  
 available on STANDARDS from 46" (also with HB panel)  
 available on SPECIALS from 70" and 82" (on request)

**Format** 46", 70", 82"  
**Aspect Ratio** 16:9  
**Resolution** 1920x1080 px  
**PC** Integrated on format 46" (TYPE 2703)  
 External on format 70" and 82"  
**Connections** Video-PC-Audio-HDMI-  
 DVI-VGA-RS232  
**Controls** OSD Remote control  
**Glass overlay** 3 mm tempered glass  
**Operating conditions** Storage: da - 20° c a 65° c  
 Working: da 0° c a 50° c  
 IP 30  
 93%  
**Protection Class** IP 30  
**Brightness transmission** 93%  
**Touch Screen technology** Touch Window Multitouch  
**Response Time** 7-12 mSec  
**Calibration** Integrated Calibration Software  
**Software compatibility** Windows (MAC optional)



# TECHNICAL SPECIFICATIONS

|                      | <b>PRODUCT NAME: QUADRO LCD 32 HD</b>  | <b>QUADRO LCD 42 FHD</b>   | <b>QUADRO LCD 46 FHD</b>   |
|----------------------|--|--|--|
| <b>DISPLAY PANEL</b> | <p>Screen size: 32" (82 cm) diagonal<br/>Aspect Ratio: 16:9<br/>Resolution: 1366 (H) x 768 (V) pixels<br/>Pixel pitch: 0.51075 (H) x 0.51075 (V) [mm]<br/>Useful screen: 697.68 (H) x 392.25 (V) [mm]<br/>Brightness: 450 cd/m2 (typical)<br/>Contrast ratio: 3,000:1 (typical)<br/>Viewing angle: 178° (in all directions)<br/>Colors: 16.7 Mil<br/>Response time: 6.5 mSec (G to G)</p>  | <p>42" (107 cm) diagonal<br/>16:9<br/>1920 (H) x 1080 (V) pixels<br/>0.48 (H) x 0.48 (V) [mm]<br/>930 (H) x 523 (V) [mm]<br/>450 cd/m2 (typical)<br/>5,000:1 (typical)<br/>176° (in all directions)<br/>16.7 Mil<br/>6.5 mSec (G to G)</p>   | <p>46" (117 cm) diagonal<br/>16:9<br/>1920 (H) x 1080 (V) pixels<br/>0.53025 (H) x 0.53025 (V) [mm]<br/>1018.08 (H) x 572.67 (V) [mm]<br/>450 cd/m2 (typical)<br/>3,000:1 (typical)<br/>178° (in all directions)<br/>16.7 Mil<br/>6.5 mSec (G to G)</p>  |
| <b>CONNECTIONS</b>   | <p>Video: 1 x RCA [CVBS1, input only]<br/>1 x RCA [CVBS2, input only]<br/>1 x mini DIN 4 pin [Y/C, input only]<br/>3 x RCA [YPbPr, input only]<br/>PC: 1 x Dsub-15 HD [Analog RGB, input]<br/>1 x DVI-D [Digital RGB, input]<br/>HDMI: 1 X HDMI [Audio e Video con HDCP, input only]<br/>Audio: 2 x RCA [CVBS1 stereo input]<br/>2 x RCA [CVBS2 / S.Video stereo input]<br/>2 x RCA [Component stereo input]<br/>1 x jack 3.5 mm [PC stereo input]<br/>Power stereo output, speakers [clinch]<br/>Control: 1 x Dsub-9 female [Input]<br/>Local Key Board<br/>Remote control</p> <p>Loophrough unit<br/>PC: 1 x Dsub-15 HD [Analog RGB, output] (OPTIONAL)<br/>1 x DVI-D [Digital RGB, output] (OPTIONAL)<br/>Control: 1 x Dsub-9 female [output] (OPTIONAL)</p>  | <p>1 x RCA [CVBS1, input only]<br/>1 x RCA [CVBS2, input only]<br/>1 x mini DIN 4 pin [Y/C, input only]<br/>3 x RCA [YPbPr, input only]<br/>1 x Dsub-15 HD [Analog RGB, input]<br/>1 x DVI-D [Digital RGB, input]<br/>1 X HDMI [Audio e Video con HDCP, input only]<br/>2 x RCA [CVBS1 stereo input]<br/>2 x RCA [CVBS2 / S.Video stereo input]<br/>2 x RCA [Component stereo input]<br/>1 x jack 3.5 mm [PC stereo input]<br/>Power stereo output, speakers [clinch]<br/>1 x Dsub-9 female [Input]<br/>Local Key Board<br/>Remote control</p> <p>1 x Dsub-15 HD [Analog RGB, output] (OPTIONAL)<br/>1 x DVI-D [Digital RGB, output] (OPTIONAL)<br/>1 x Dsub-9 female [output] (OPTIONAL)</p>  | <p>1 x RCA [CVBS1, input only]<br/>1 x RCA [CVBS2, input only]<br/>1 x mini DIN 4 pin [Y/C, input only]<br/>3 x RCA [YPbPr, input only]<br/>1 x Dsub-15 HD [Analog RGB, input]<br/>1 x DVI-D [Digital RGB, input]<br/>1 X HDMI [Audio e Video con HDCP, input only]<br/>2 x RCA [CVBS1 stereo input]<br/>2 x RCA [CVBS2 / S.Video stereo input]<br/>2 x RCA [Component stereo input]<br/>1 x jack 3.5 mm [PC stereo input]<br/>Power stereo output, speakers [clinch]<br/>1 x Dsub-9 female [Input]<br/>Local Key Board<br/>Remote control</p> <p>1 x Dsub-15 HD [Analog RGB, output] (OPTIONAL)<br/>1 x DVI-D [Digital RGB, output] (OPTIONAL)<br/>1 x Dsub-9 female [output] (OPTIONAL)</p>  |
| <b>FEATURES</b>      | <p>Video compatibility: PAL (BGH/D/I, M, N, 60), NTSC (M, 4.43), SECAM<br/>HDMI [supporting CEA-861B specs.HDCP 1.1]<br/>DTV: 480i/p, 576i/p, 720p, 1080i / 50-60 Hz, 1080p / 60 Hz<br/>Video signal level: CVBS: 1 Vpp / 75 Ohm - nominal (with AGC)<br/>Y/C: 1 Vpp / 75 Ohm - nominal (with AGC)<br/>YPbPr: 1Vpp / 75 ohm nominal<br/>VGA ~ WUXGA (1920x1080), NATIVE (1920 x 1080)<br/>Automatic frequency detection<br/>PC compatibility: VGA ~ WUXGA (1920x1080), NATIVE (1920 x 1080)<br/>Automatic frequency detection<br/>PC signal level: RGB: 0.7 Vpp / 75 Ohm (RGB), TTL (HV)<br/>1 x DVI-D [Digital RGB, input only]<br/>Frequency range: Horizontal: 20 KHz - 82 KHz<br/>Vertical: 55 Hz - 90 Hz<br/>Audio signal level: Audio Input: 0.15 to 1 V<br/>Audio Output: 2 x 7W (10% THD)<br/>Speakers: Integrated speaker 10W<br/>Embedded splitter up to 5x5 with bezel compensation<br/>Control interfaces: Remote Control are OSD assisted<br/>RS-232 Serial Port<br/>Loophrough unit (OPTIONAL): RS-232 pass-through<br/>VGA pass-through<br/>DVI pass-trough<br/>All inputs converted to DVI and retransmitted<br/>Commands and controls are available from any of the three user's interfaces</p> | <p>PAL (BGH/D/I, M, N, 60), NTSC (M, 4.43), SECAM<br/>HDMI [supporting CEA-861B specs.HDCP 1.1]<br/>480i/p, 576i/p, 720p, 1080i / 50-60 Hz, 1080p / 60 Hz<br/>CVBS: 1 Vpp / 75 Ohm - nominal (with AGC)<br/>Y/C: 1 Vpp / 75 Ohm - nominal (with AGC)<br/>YPbPr: 1Vpp / 75 ohm nominal<br/>VGA ~ WUXGA (1920x1080), NATIVE (1920 x 1080)<br/>Automatic frequency detection<br/>RGB: 0.7 Vpp / 75 Ohm (RGB), TTL (HV)<br/>1 x DVI-D [Digital RGB, input only]<br/>Horizontal: 20 KHz - 82 KHz<br/>Vertical: 55 Hz - 90 Hz<br/>Audio Input: 0.15 to 1 V<br/>Audio Output: 2 x 7W (10% THD)<br/>Integrated speaker 10W<br/>Embedded splitter up to 5x5 with bezel compensation<br/>Remote Control are OSD assisted<br/>RS-232 Serial Port<br/>RS-232 pass-through<br/>VGA pass-through<br/>DVI pass-trough<br/>All inputs converted to DVI and retransmitted<br/>Commands and controls are available from any of the three user's interfaces</p> | <p>PAL (BGH/D/I, M, N, 60), NTSC (M, 4.43), SECAM<br/>HDMI [supporting CEA-861B specs.HDCP 1.1]<br/>480i/p, 576i/p, 720p, 1080i / 50-60 Hz, 1080p / 60 Hz<br/>CVBS: 1 Vpp / 75 Ohm - nominal (with AGC)<br/>Y/C: 1 Vpp / 75 Ohm - nominal (with AGC)<br/>YPbPr: 1Vpp / 75 ohm nominal<br/>VGA ~ WUXGA (1920x1080), NATIVE (1920 x 1080)<br/>Automatic frequency detection<br/>RGB: 0.7 Vpp / 75 Ohm (RGB), TTL (HV)<br/>1 x DVI-D [Digital RGB, input only]<br/>Horizontal: 20 KHz - 82 KHz<br/>Vertical: 55 Hz - 90 Hz<br/>Audio Input: 0.15 to 1 V<br/>Audio Output: 2 x 7W (10% THD)<br/>Integrated speaker 10W<br/>Embedded splitter up to 5x5 with bezel compensation<br/>Remote Control are OSD assisted<br/>RS-232 Serial Port<br/>RS-232 pass-through<br/>VGA pass-through<br/>DVI pass-trough<br/>All inputs converted to DVI and retransmitted<br/>Commands and controls are available from any of the three user's interfaces</p> |
| <b>CONTROLS</b>      | <p>Video: Preset (4 selections + user)<br/>Brightness, Contrast, Color, Sharpness<br/>Colour temperature (5 selections + user)<br/>Still frame<br/>Source selection<br/>(16:9, 14:9, 4:3, Panoramic, Zoom 1, Zoom2)<br/>(16:9, 1:1, 4:3)<br/>Size Video: Self adjustment of picture dimension<br/>Geometry: Free adjustment of picture position<br/>Presets (4 selections + user)<br/>Audio: Volume, Balance<br/>Equalizer (5 bands)<br/>Stereo / Dual1 / Dual2<br/>AVC(Automatic VolumeControl)<br/>Stand-by mode<br/>Others: Status Indication<br/>Programmable OSD aspect<br/>Screensaver (blue screen, pixel shift , wiper, gray background)<br/>Fan automatic manage/cooling<br/>Resize/Shift Multi Screen Function (up to 5x5)<br/>Automatic temperature control with threshold setting<br/>Timer (time, wake-up, sleep)<br/>Display address selection<br/>DPMS<br/>Auto Input Search<br/>DE, ES, FR, EN, IT, PT</p>   | <p>Preset (4 selections + user)<br/>Brightness, Contrast, Color, Sharpness<br/>Colour temperature (5 selections + user)<br/>Still frame<br/>Source selection<br/>(16:9, 14:9, 4:3, Panoramic, Zoom 1, Zoom2)<br/>(16:9, 1:1, 4:3)<br/>Self adjustment of picture dimension<br/>Free adjustment of picture position<br/>Presets (4 selections + user)<br/>Volume, Balance<br/>Equalizer (5 bands)<br/>Stereo / Dual1 / Dual2<br/>AVC(Automatic VolumeControl)<br/>Stand-by mode<br/>Status Indication<br/>Programmable OSD aspect<br/>Screensaver (blue screen, pixel shift , wiper, gray background)<br/>Fan automatic manage/cooling<br/>Resize/Shift Multi Screen Function (up to 5x5)<br/>Automatic temperature control with threshold setting<br/>Timer (time, wake-up, sleep)<br/>Display address selection<br/>DPMS<br/>Auto Input Search<br/>DE, ES, FR, EN, IT, PT</p>   | <p>Preset (4 selections + user)<br/>Brightness, Contrast, Color, Sharpness<br/>Colour temperature (5 selections + user)<br/>Still frame<br/>Source selection<br/>(16:9, 14:9, 4:3, Panoramic, Zoom 1, Zoom2)<br/>(16:9, 1:1, 4:3)<br/>Self adjustment of picture dimension<br/>Free adjustment of picture position<br/>Presets (4 selections + user)<br/>Volume, Balance<br/>Equalizer (5 bands)<br/>Stereo / Dual1 / Dual2<br/>AVC(Automatic VolumeControl)<br/>Stand-by mode<br/>Status Indication<br/>Programmable OSD aspect<br/>Screensaver (blue screen, pixel shift , wiper, gray background)<br/>Fan automatic manage/cooling<br/>Resize/Shift Multi Screen Function (up to 5x5)<br/>Automatic temperature control with threshold setting<br/>Timer (time, wake-up, sleep)<br/>Display address selection<br/>DPMS<br/>Auto Input Search<br/>DE, ES, FR, EN, IT, PT</p>   |
| <b>PHYSICAL</b>      | <p>Language: 818 (W) x 512 (H) x 136 (D)<br/>Dimensions: 115/230 VAC ± 15%, 50/60 Hz<br/>Mains voltage: 142 W (without PC)<br/>Power consumption: Storage: -20° C to 65° C (max 85% RH not condensing)<br/>Operating conditions: Working: 0° C to 50° C (max 85% RH not condensing)</p>  | <p>1050 (W) x 643 (H) x 136 (D)<br/>115/230 VAC ± 15%, 50/60 Hz<br/>239 W (without PC)<br/>Storage: -20° C to 65° C (max 85% RH not condensing)<br/>Working: 0° C to 50° C (max 85% RH not condensing)</p>   | <p>1136 (W) x 692 (H) x 158 (D)<br/>115/230 VAC ± 15%, 50/60 Hz<br/>270 W<br/>Storage: -20° C to 65° C (max 85% RH not condensing)<br/>Working: 0° C to 50° C (max 85% RH not condensing)</p>  |

**QUADRO LCD 46 HB 1500 cd**

46" (117 cm) diagonal  
16:9  
1366 (H) x 768 (V) pixels  
0.7455 (H) x 0.7455 (V) [mm]  
1018.353 (H) x 572.544 (V) [mm]  
1500 cd/m2 (typical)  
3,000:1 (typical)  
178° (in all directions)  
16.7 Mil  
6,5 mSec (G to G)

1 x RCA [CVBS1, input only]  
1 x RCA [CVBS2, input only]  
1 x mini DIN 4 pin [Y/C, input only]  
3 x RCA [YPbPr, input only]  
1 x Dsub-15 HD [Analog RGB, input]  
1 x DVI-D [Digital RGB, input]  
1 X HDMI [Audio e Video con HDCP; input only]  
2 x RCA [CVBS1 stereo input]  
2 x RCA [CVBS2 / S.Video stereo input]  
2 x RCA [Component stereo input]  
1 x jack 3.5 mm [PC stereo input]  
Power stereo output, speakers [clinch]  
1 x Dsub-9 female [Input]  
Local Key Board  
Remote control

1 x Dsub-15 HD [Analog RGB, output] (OPTIONAL)  
1 x DVI-D [Digital RGB, output] (OPTIONAL)  
1 x Dsub-9 female [output] (OPTIONAL)

PAL (BGH/D/I, M, N, 60), NTSC (M, 4.43), SECAM  
HDMI [supporting CEA-861B specs.HDCP 1.1]  
480i/p576i/p720p, 1080i/50-60Hz, 1080p/60Hz  
CVBS: 1 Vpp / 75 Ohm - nominal (with AGC)  
Y/C: 1 Vpp / 75 Ohm - nominal (with AGC)  
YPbPr, 1 Vpp / 75 ohm nominal  
VGA ~ WUXGA (1920x1080), NATIVE (1920x1080)  
Automatic frequency detection  
RGB: 0.7 Vpp / 75 Ohm (RGB), TTL (HV)  
1 x DVI-D [Digital RGB, input only]  
Horizontal: 20 KHz - 82 KHz  
Vertical: 55 Hz - 90 Hz  
Audio Input: 0.15 to 1 V  
Audio Output: 2 x 7W (10% THD)  
Integrated speaker 10W  
Embedded splitter up to 5x5 with bezel compensation  
Remote Control are OSD assisted  
RS-232 Serial Port  
RS-232 pass-through  
VGA pass-through  
DVI pass-through  
All inputs converted to DVI and retransmitted  
Commands and controls are available from any of the three user's interfaces

Preset (4 selections + user)  
Brightness, Contrast, Color, Sharpness  
Colour temperature (5 selections + user)  
Still frame  
Source selection  
(16:9, 14:9, 4:3, Panoramic, Zoom1, Zoom2)  
(16:9, 1:1, 4:3)  
Self adjustment of picture dimension  
Free adjustment of picture position  
Presets (4 selections + user)  
Volume, Balance  
Equalizer (5 bands)  
Stereo / Dual1 / Dual2  
AVC (Automatic Volume Control)  
Stand-by mode  
Status Indication  
Programmable OSD aspect  
Screensaver (blue screen, pixel shift, wiper, gray background)  
Fan automatic manage/cooling  
Resize/Shift Multi Screen Function (up to 5x5)  
Automatic temperature control with threshold setting  
Timer (time, wake-up, sleep)  
Display address selection  
DPMS  
Auto Input Search  
DE, ES, FR, EN, IT, PT

1136 (W) x 692 (H) x 158 (D)  
115/230 VAC ± 15%, 50/60 Hz  
600 W  
Storage: -20°C to 65°C (max 85% RH not condensing)  
Working: 0°C to 50°C (max 85% RH not condensing)

**QUADRO LCD 57 FHD**

57" (145 cm) diagonal  
16:9  
1920 (H) x 1080 (V) pixels  
0.651 (H) x 0.651 (V) [mm]  
1251.36 (H) x 703.89 (V) [mm]  
600 cd/m2 (typical)  
2000:1 (typical)  
178° (in all directions)  
16.7 Mil  
6,5 mSec (G to G)

1 x RCA [CVBS1, input only]  
1 x RCA [CVBS2, input only]  
1 x mini DIN 4 pin [Y/C, input only]  
3 x RCA [YPbPr, input only]  
1 x Dsub-15 HD [Analog RGB, input]  
1 x DVI-D [Digital RGB, input]  
1 X HDMI [Audio e Video con HDCP; input only]  
2 x RCA [CVBS1 stereo input]  
2 x RCA [CVBS2 / S.Video stereo input]  
2 x RCA [Component stereo input]  
1 x jack 3.5 mm [PC stereo input]  
Power stereo output, speakers [clinch]  
1 x Dsub-9 female [Input]  
Local Key Board  
Remote control

1 x Dsub-15 HD [Analog RGB, output] (OPTIONAL)  
1 x DVI-D [Digital RGB, output] (OPTIONAL)  
1 x Dsub-9 female [output] (OPTIONAL)

PAL (BGH/D/I, M, N, 60), NTSC (M, 4.43), SECAM  
HDMI [supporting CEA-861B specs.HDCP 1.1]  
480i/p576i/p720p, 1080i/50-60Hz, 1080p/60Hz  
CVBS: 1 Vpp / 75 Ohm - nominal (with AGC)  
Y/C: 1 Vpp / 75 Ohm - nominal (with AGC)  
YPbPr, 1 Vpp / 75 ohm nominal  
VGA ~ WUXGA (1920x1080), NATIVE (1920x1080)  
Automatic frequency detection  
RGB: 0.7 Vpp / 75 Ohm (RGB), TTL (HV)  
1 x DVI-D [Digital RGB, input only]  
Horizontal: 20 KHz - 82 KHz  
Vertical: 55 Hz - 90 Hz  
Audio Input: 0.15 to 1 V  
Audio Output: 2 x 7W (10% THD)  
Integrated speaker 10W  
Embedded splitter up to 5x5 with bezel compensation  
Remote Control are OSD assisted  
RS-232 Serial Port  
RS-232 pass-through  
VGA pass-through  
DVI pass-through  
All inputs converted to DVI and retransmitted  
Commands and controls are available from any of the three user's interfaces

Preset (4 selections + user)  
Brightness, Contrast, Color, Sharpness  
Colour temperature (5 selections + user)  
Still frame  
Source selection  
(16:9, 14:9, 4:3, Panoramic, Zoom1, Zoom2)  
(16:9, 1:1, 4:3)  
Self adjustment of picture dimension  
Free adjustment of picture position  
Presets (4 selections + user)  
Volume, Balance  
Equalizer (5 bands)  
Stereo / Dual1 / Dual2  
AVC (Automatic Volume Control)  
Stand-by mode  
Status Indication  
Programmable OSD aspect  
Screensaver (blue screen, pixel shift, wiper, gray background)  
Fan automatic manage/cooling  
Resize/Shift Multi Screen Function (up to 5x5)  
Automatic temperature control with threshold setting  
Timer (time, wake-up, sleep)  
Display address selection  
DPMS  
Auto Input Search  
DE, ES, FR, EN, IT, PT

1375 (W) x 827 (H) x 147 (D)  
115/230 VAC ± 15%, 50/60 Hz  
430 W  
Storage: -20°C to 65°C (max 85% RH not condensing)  
Working: 0°C to 50°C (max 85% RH not condensing)

**QUADRO LCD 70 FHD**

70" (178 cm) diagonal  
16:9  
1920 (H) x 1080 (V) pixels  
0.807 (H) x 0.807 (V) [mm]  
1549.44 (H) x 871.56 (V) [mm]  
600 cd/m2 (typical)  
1500:1 (typical)  
178° (in all directions)  
16.7 Mil  
6,5 mSec (G to G)

1 x RCA [CVBS1, input only]  
1 x RCA [CVBS2, input only]  
1 x mini DIN 4 pin [Y/C, input only]  
3 x RCA [YPbPr, input only]  
1 x Dsub-15 HD [Analog RGB, input]  
1 x DVI-D [Digital RGB, input]  
1 X HDMI [Audio e Video con HDCP; input only]  
2 x RCA [CVBS1 stereo input]  
2 x RCA [CVBS2 / S.Video stereo input]  
2 x RCA [Component stereo input]  
1 x jack 3.5 mm [PC stereo input]  
Power stereo output, speakers [clinch]  
1 x Dsub-9 female [Input]  
Local Key Board  
Remote control

1 x Dsub-15 HD [Analog RGB, output] (OPTIONAL)  
1 x DVI-D [Digital RGB, output] (OPTIONAL)  
1 x Dsub-9 female [output] (OPTIONAL)

PAL (BGH/D/I, M, N, 60), NTSC (M, 4.43), SECAM  
HDMI [supporting CEA-861B specs.HDCP 1.1]  
480i/p576i/p720p, 1080i/50-60Hz, 1080p/60Hz  
CVBS: 1 Vpp / 75 Ohm - nominal (with AGC)  
Y/C: 1 Vpp / 75 Ohm - nominal (with AGC)  
YPbPr, 1 Vpp / 75 ohm nominal  
VGA ~ WUXGA (1920x1080), NATIVE (1920x1080)  
Automatic frequency detection  
RGB: 0.7 Vpp / 75 Ohm (RGB), TTL (HV)  
1 x DVI-D [Digital RGB, input only]  
Horizontal: 20 KHz - 82 KHz  
Vertical: 55 Hz - 90 Hz  
Audio Input: 0.15 to 1 V  
Audio Output: 2 x 7W (10% THD)  
Integrated speaker 10W  
Embedded splitter up to 5x5 with bezel compensation  
Remote Control are OSD assisted  
RS-232 Serial Port  
RS-232 pass-through  
VGA pass-through  
DVI pass-through  
All inputs converted to DVI and retransmitted  
Commands and controls are available from any of the three user's interfaces

Preset (4 selections + user)  
Brightness, Contrast, Color, Sharpness  
Colour temperature (5 selections + user)  
Still frame  
Source selection  
(16:9, 14:9, 4:3, Panoramic, Zoom1, Zoom2)  
(16:9, 1:1, 4:3)  
Self adjustment of picture dimension  
Free adjustment of picture position  
Presets (4 selections + user)  
Volume, Balance  
Equalizer (5 bands)  
Stereo / Dual1 / Dual2  
AVC (Automatic Volume Control)  
Stand-by mode  
Status Indication  
Programmable OSD aspect  
Screensaver (blue screen, pixel shift, wiper, gray background)  
Fan automatic manage/cooling  
Resize/Shift Multi Screen Function (up to 5x5)  
Automatic temperature control with threshold setting  
Timer (time, wake-up, sleep)  
Display address selection  
DPMS  
Auto Input Search  
DE, ES, FR, EN, IT, PT

1676 (W) x 999 (H) x 147 (D)  
115/230 VAC ± 15%, 50/60 Hz  
800 W  
Storage: -20°C to 65°C (max 85% RH not condensing)  
Working: 0°C to 50°C (max 85% RH not condensing)

**QUADRO LCD 82 FHD**

82" (208 cm) diagonal  
16:9  
1920 (H) x 1080 (V) pixels  
0.9405 (H) x 0.9405 (V) [mm]  
1805.76 (H) x 1015.74 (V) [mm]  
600 cd/m2 (typical)  
2000:1 (typical)  
178° (in all directions)  
16.7 Mil  
6,5 mSec (G to G)

1 x RCA [CVBS1, input only]  
1 x RCA [CVBS2, input only]  
1 x mini DIN 4 pin [Y/C, input only]  
3 x RCA [YPbPr, input only]  
1 x Dsub-15 HD [Analog RGB, input]  
1 x DVI-D [Digital RGB, input]  
1 X HDMI [Audio e Video con HDCP; input only]  
2 x RCA [CVBS1 stereo input]  
2 x RCA [CVBS2 / S.Video stereo input]  
2 x RCA [Component stereo input]  
1 x jack 3.5 mm [PC stereo input]  
Power stereo output, speakers [clinch]  
1 x Dsub-9 female [Input]  
Local Key Board  
Remote control

1 x Dsub-15 HD [Analog RGB, output] (OPTIONAL)  
1 x DVI-D [Digital RGB, output] (OPTIONAL)  
1 x Dsub-9 female [output] (OPTIONAL)

PAL (BGH/D/I, M, N, 60), NTSC (M, 4.43), SECAM  
HDMI [supporting CEA-861B specs.HDCP 1.1]  
480i/p576i/p720p, 1080i/50-60Hz, 1080p/60Hz  
CVBS: 1 Vpp / 75 Ohm - nominal (with AGC)  
Y/C: 1 Vpp / 75 Ohm - nominal (with AGC)  
YPbPr, 1 Vpp / 75 ohm nominal  
VGA ~ WUXGA (1920x1080), NATIVE (1920x1080)  
Automatic frequency detection  
RGB: 0.7 Vpp / 75 Ohm (RGB), TTL (HV)  
1 x DVI-D [Digital RGB, input only]  
Horizontal: 20 KHz - 82 KHz  
Vertical: 55 Hz - 90 Hz  
Audio Input: 0.15 to 1 V  
Audio Output: 2 x 7W (10% THD)  
Integrated speaker 10W  
Embedded splitter up to 5x5 with bezel compensation  
Remote Control are OSD assisted  
RS-232 Serial Port  
RS-232 pass-through  
VGA pass-through  
DVI pass-through  
All inputs converted to DVI and retransmitted  
Commands and controls are available from any of the three user's interfaces

Preset (4 selections + user)  
Brightness, Contrast, Color, Sharpness  
Colour temperature (5 selections + user)  
Still frame  
Source selection  
(16:9, 14:9, 4:3, Panoramic, Zoom1, Zoom2)  
(16:9, 1:1, 4:3)  
Self adjustment of picture dimension  
Free adjustment of picture position  
Presets (4 selections + user)  
Volume, Balance  
Equalizer (5 bands)  
Stereo / Dual1 / Dual2  
AVC (Automatic Volume Control)  
Stand-by mode  
Status Indication  
Programmable OSD aspect  
Screensaver (blue screen, pixel shift, wiper, gray background)  
Fan automatic manage/cooling  
Resize/Shift Multi Screen Function (up to 5x5)  
Automatic temperature control with threshold setting  
Timer (time, wake-up, sleep)  
Display address selection  
DPMS  
Auto Input Search  
DE, ES, FR, EN, IT, PT

1927 (W) x 1137 (H) x 152 (D)  
115/230 VAC ± 15%, 50/60 Hz  
1100 W  
Storage: -20°C to 65°C (max 85% RH not condensing)  
Working: 0°C to 50°C (max 85% RH not condensing)



[www.hantarex.com](http://www.hantarex.com)

**HANTAREX INTERNATIONAL LIMITED**

Head Office:

34 Salisbury Street

LONDON

NW8 8QE

TEL: +44(0) 20 8778 1414

FAX: +44(0) 20 8659 9348

[www.hantarex.com](http://www.hantarex.com)

[sales@hantarex.com](mailto:sales@hantarex.com)



UNI EN ISO 9001:2008